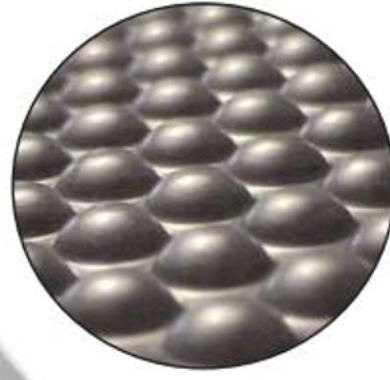
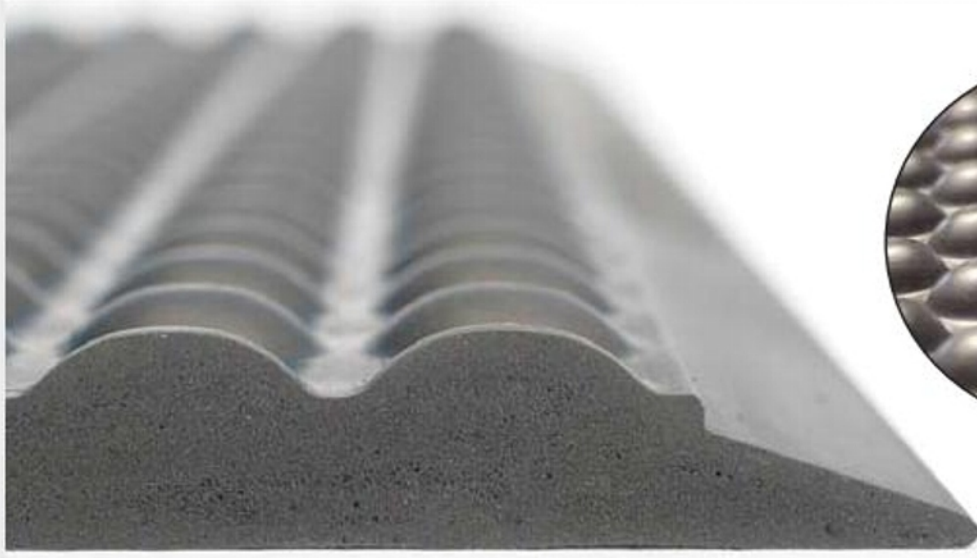


The Ergomat Classic is made of pure polyurethane and is designed to increase comfort while reducing tripping hazards, body aches, quality issues, and sick leaves. This is the **ULTIMATE** mat for dry environments or where static electricity control is a must.



ERGOMAT Classic

Unmatched Safety Features

- Molded beveled edges
 - They will never curl up, eliminating tripping hazards
- Any size, any shape mat, always in one piece
 - No overlapping or worn out connecting mats, also eliminating tripping hazards

Highest Quality

- Raw virgin material only
 - Unbeaten durability and lifetime ergonomic benefits
- Not only anti-fatigue, but also true ergonomic benefits
 - Unique ergonomic design, eliminating and preventing common problems encountered in standing environments, by stimulating the body to increase blood circulation and alertness, reducing sick leaves, workers' compensation and quality issues.

The Complete Bubble Advantage

- Solid mat throughout, no hollow bubbles that collapse.
 - Long-term solution to keep the "bounce back" effect throughout the warranty period.
- Anti-static properties
- Silicone & latex-free
- Cleanroom Class 5 (100)

Unmatched 8-year Warranty

All Ergomat product lines are conditionally warranted against normal usage* 24 hours a day, 7 days a week. The warranty does not cover damage caused by the mat being dragged or pulled from a heavy load or items being pushed or dragged across the product, such as skids or pallets. The warranty against chemicals, oils, liquids, or other matter differs with the type of mat. Please consult your dealer or an Ergomat Rep to select the correct mat for your environment. The warranty periods starts from the date of purchase.

*It is considered normal usage when a person stands or walks on the Ergomat with regular footwear.

1.877.ERGOMAT[®].COM

Properties	Norm	ERGOMAT Classic
Material		Foamed polyurethane bubble surface
Color		Anthracite
Weight		2600 g +/- 50 g // 5.5 lbs +/- 0.1lbs
Length without beveled edges		90,0 cm +/- 1% // 35.5" +/- 3/8"
Width without beveled edges		60,0 cm +/- 1% // 23.5" +/- 3/8"
Thickness		15 mm // 5/8"
Density	DIN 53 479 A	380 kg/m ³ +/- 10 %
Hardness	DIN 53 505	30-40 Sh A
Compression Pressure face = ø 100 mm % by pressure of 240 kg	Tinby A/S standard	50%
Abrasion Load = 5 N	DIN 53 516 / ISO 46 49	180 mm ³ // 7 in ³
Breaking point / tensile strength	EN ISO 527-1	2 Mpa
Elongation at break	EN ISO 527-1	500%
Tearing strength	ASTM D 624	4 N/mm
Electrical resistance Surface point to point % 50 RH	ANSI/ESD -S7.1-1994 And conforms to DS/EN 100015-1	1 x 10 ⁸ W - 5 x 10 ⁹ W
Fire behavior	DIN 4102-B1 Part 14/ DIN EN 13 501-1	Not tested B2 Efl
Thermal properties min. use max. use max. short duration	The ergonomic properties remain	0°C // 32°F 80°C // 176°F 120°C // 248°F
UV-resistance		Inferior
Hydrolytic resistance		Inferior
Clean room application	EN ISO 14644-1	Class 100 (ISO Class 5)
Warranty		8 years